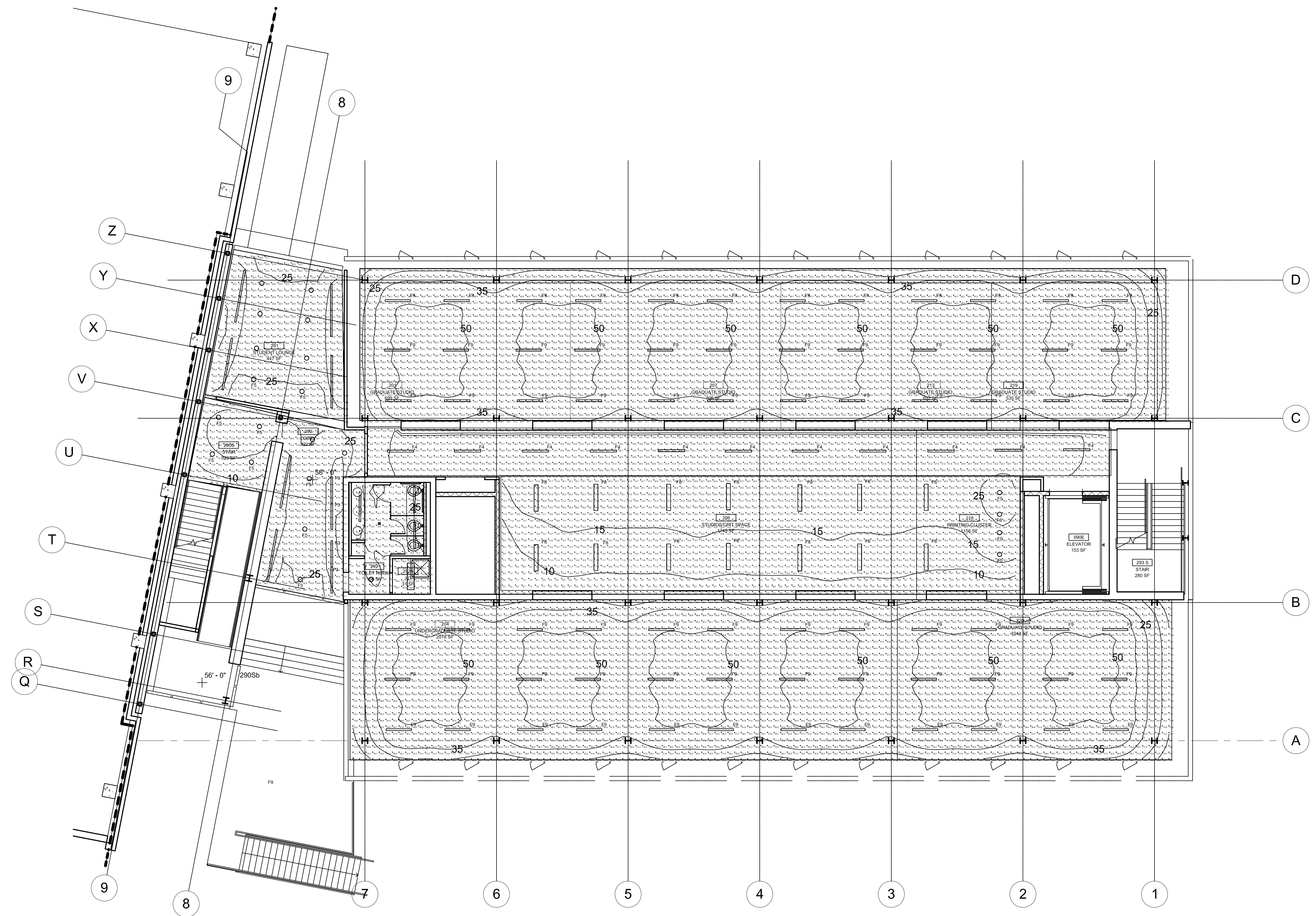




Thesis 2007
 Pennsylvania State University
 State College, PA 06802

KHA N DANG, LC INTERN
 ARCHITECTURAL ENGINEERING
 LIGHTING | ELECTRICAL option
 T: 267 229 9370
 E: knd107@gmail.com
 W: www.arch.psu.edu/thesis/portfolio/2007/
 /portfolios/knd107
 C: Dr. Richard Mistrick
 C2: Ted Damerth



Symbol	Level	Qty	Code/Number	Description	Units	No.	Lumens	LF	Watts
[Symbol]	F1	1	PV 2-4750	HEAVY DUTY INDUSTRIAL 12" X 4" 2 BAY TROUSER SLOTTED REFLECTOR	L17B20LIES	4850	0.75	122.6	
[Symbol]	F2	0	EG48H-2-64THD	FLUORESCENT BATED @ 3000 LUMENS	np4825.6m	5000	0.81	120.4	
[Symbol]	F3	18	LW48H-1-64THD	FLUORESCENT BATED @ 3000 LUMENS	np4825.6m	4850	0.81	88.9	
[Symbol]	F4	11	LW48H-1-64THD	FLUORESCENT BATED @ 3000 LUMENS	L19P34.6m	5000	0.81	16.1	
[Symbol]	F5	22	LSP-3757F-BW	ONE 30-WATT COMPACT FLUORESCENT TUBE HORIZONTAL POOL	L17L1411.8LIES	2400	0.75	34	
[Symbol]	F6	0	M18W8T 2	FLUORESCENT RECESSED TROUSER SLOTTED REFLECTOR 120TUB HORIZONTAL LAMP, PRISMATIC LENS AND SOFT-EDGED JOINT	L19X068.6m	4850	0.75	124	
[Symbol]	F7	0	EG48H-2-64THD	FLUORESCENT BATED @ 3000 LUMENS	np4825.6m	5000	0.75	120.5	
[Symbol]	F8	14	EM48H-2-64THD	FLUORESCENT BATED @ 3000 LUMENS EACH	np4825.6m	5000	0.75	120.4	
[Symbol]	F9	23	MPC48RFP-2500-420V	EXTRUDED ALUMINUM TROUSER SLOTTED REFLECTOR, 120TUB HORIZONTAL LAMP, PRISMATIC LENS AND SOFT-EDGED ALUMINUM COVER	04252354.6m	4850	0.75	98	

Name	# Luminaires	Total Watts	Area	Density
Bedroom	4	213.7 W	122 SF	1.74 W/ft²
Corridor	11	661.1 W	636.7 SF	1.04 W/ft²
Off Space	18	1011.6 W	1368.9 SF	0.74 W/ft²
Janitor Closet	1	123.8 W	31.9 SF	3.88 W/ft²
Entry	17	782.2 W	472.8 SF	1.65 W/ft²
Power Quality Zone #1	36	3964.2 W	3308.8 SF	1.2 W/ft²
Power Quality Zone #2	17	782.2 W	472.8 SF	1.65 W/ft²
Student Lounge	16	751.2 W	429.8 SF	1.74 W/ft²
Stair	6	664.0 W	308.8 SF	2.15 W/ft²

Description	Symbol	Area	W	W/ft²	W/ft²	W/ft²
Bedroom	+	12.8%	31.3%	4.8%	6.5%	2.8%
Corridor	+	16.5%	24.4%	5.0%	9.1%	9.1%
Off Space	+	15.4%	34.4%	5.0%	5.7%	3.1%
Janitor Closet	+	39.1%	31.2%	28.5%	1.1%	1.1%
Entry	+	28.2%	53.3%	7.9%	7.6%	2.8%
Student Lounge	+	39.3%	58.8%	16.2%	2.8%	1.1%
Stair	+	41.4%	58.8%	7.3%	7.7%	6.7%
Stair B	+	43.3%	58.7%	6.0%	7.1%	6.4%

NOTE:

While great efforts have been taken to provide accurate and complete information, please be aware that the information contained herewith is considered a work-in-progress for this thesis project. Modifications and changes related to the original building designs and construction methodologies for this senior thesis project are solely the interpretation of Kha N. Dang. Changes and discrepancies in no way imply that the original design contained errors or was flawed. Differing assumptions, code references, requirements, and methodologies have been incorporated into this thesis project; therefore, investigation results may vary from the original design.

NOT FOR CONSTRUCTION

NO.	DATE	REVISION

PROJECT NAME
**THESIS 2007
 SCULPTURE BIDG
 PARKING GARAGE**
 BUILDING NAME & ADDRESS
 PROJECT NUMBER

DRAWING TITLE
 TYP. 2-4 FLOORS PHOTOMETRIC DATA
 SCALE
 1/8" = 1'-0"
 DRAWN BY
 KND
 CAD FILENAME
 XX-XX-XXX.DWG
 DATE
 03/11/07
 DRAWING NUMBER
EL-301